

CHANT ANTIPHONS

for the Sundays of Lent

The antiphon settings that follow are offered as workshop music. I have not had the opportunity to test them in practice.

The texts are taken from the current ICEL translation of the *Roman Missal*, with some alternatives from the *Simple Gradual*. For further texts, see the *Processional* at <http://www.romanmissal.org.uk/Home/Music/Processional>

The music may be sung unaccompanied – and indeed this would be particularly appropriate for Lent. If accompaniment is required I can provide it on request.

A single chant mode and melodic theme is used for all the Entrance Antiphons (tone 4), and another for the Communion Antiphons (tone 2), in order to provide a seasonal ‘feel’. Two simple psalm-tones are given at the end of the antiphon settings: other psalm-tones of the same modes may be substituted.

Entrance Antiphons from the Missal are regularly too long to serve as memorable refrains. However, in all the Missal antiphons provided here the ‘punch-line’ occurs as the first phrase. I have therefore delineated this in the music by a double-bar line and suggest that this first phrase might serve as a simple refrain.

Most Communion Antiphons are shorter and most refer to the Gospel of the day (year C): the one responsory-type Communion antiphon I have divided into two.

The psalm verses suggested are those proposed by the ICEL *Antiphonary* for the Missal texts, and by the *Simple Gradual* for its texts. It is not necessary or even recommended that all the verses given are used. It is customary to add a doxology as the last verse.

Under the conditions of ICEL copyright, the texts may be printed with the ICEL copyright ascription (see the end of the antiphon pages) but without permission from ICEL if the copies are for one-time not-for-sale use. I grant permission to reprint my music under the same conditions.

I will be pleased to receive comments and suggestions for further work along these lines.

John Ainslie

ENTRANCE ANTIPHONS

1st Sunday of Lent



When he calls on me, I will ans-wer him; I will de-li - - ver him and give him glo - - ry,



I will grant him length of days.

Psalm 90, verses 3-7

— or (Simple Gradual)



When you call to the Lord, he will lis-ten; when you cry out, he will say: Here I am.

Psalm 90, verses 3-7

2nd Sunday of Lent



Of you my heart has spo-ken: Seek his__ face. It is your face, O Lord, that I seek;



hide not your face from me.

Psalm 26(27)

— or (Simple Gradual)



Je-sus took his dis-ci-ples up the moun-tain and was trans-fig-ured in their pre-sence.

Psalm 83(84), verses 1-4

3rd Sunday of Lent



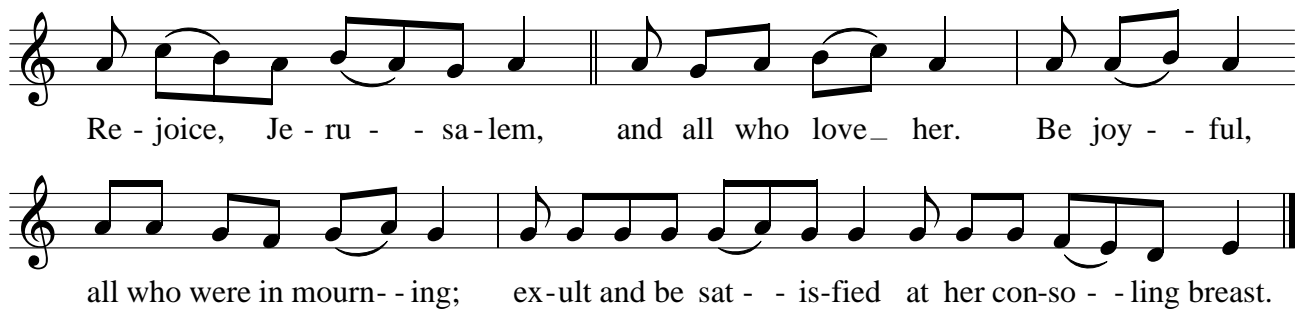
My eyes are al-ways on__ the Lord, for he res - - cues my feet from the snare.



Turn_ to me and have mer-cy on me, for I___ am a - lone_ and poor.

Psalm 24(25), verses 1-2, 15-22

4th Sunday of Lent



Re - joice, Je - ru - - sa - lem, and all who love_ her. Be joy - - ful,
all who were in mourn - - ing; ex - ult and be sat - - is - fied at her con - so - - ling breast.

Isaiah 66, verses 10-14

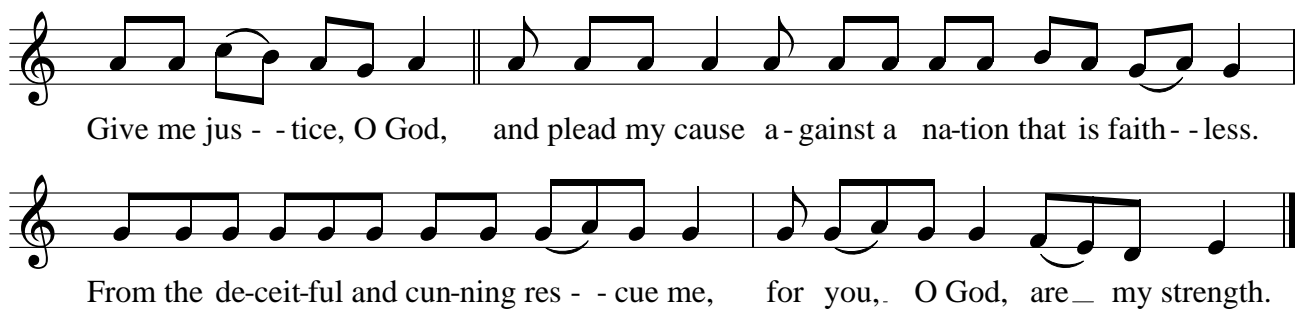
— or (Simple Gradual)



In my dis - tress I called out to the Lord; he heard my cry and set me free.

Psalms 117(118), verses 1, 4, 7-12, 14, 17

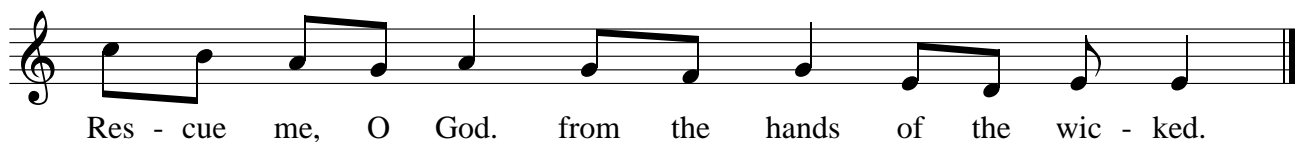
5th Sunday of Lent



Give me jus - - tice, O God, and plead my cause a - gainst a na - tion that is faith - - less.
From the de - ceit - ful and cun - ning res - - cue me, for you, O God, are_ my strength.

Psalms 42(43)

— or (Simple Gradual)



Res - cue me, O God. from the hands of the wic - ked.

Psalms 70(71), verses 1-3ab

Psalms-tone for all Entrance Antiphons



Simple Gradual texts © 1968, International Committee on English in the Liturgy, Inc.

Roman Missal texts © 2010, International Committee on English in the Liturgy, Inc.

All rights reserved.

Music © 2013 John Ainslie

COMMUNION ANTIPHONS

1st Sunday of Lent



One does not live by bread a-lone, but by ev'-ry word that comes forth from the mouth of God.

Psalm 18(19), verses 8–15

— or (Simple Gradual)



Lord, lis-ten to my cry, lis-ten to my cry.

Psalm 5, verses 1-8, 11-12

2nd Sunday of Lent

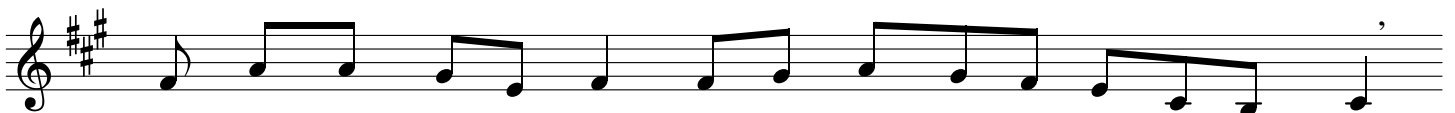


This is my be-lov - - ed Son, with whom I am well_ pleased; lis - ten to him.

Psalm 88(89), verses 6-9, 12-19

3rd Sunday of Lent

I have divided the long text of today's antiphon into two antiphons. The second may be sufficient by itself.

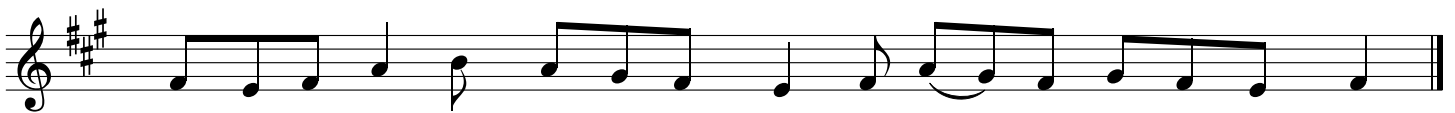


The spar - row finds a home, and the swal - low a nest for her young:



by your al - tars, O Lord__ of hosts, my King and my God.

— **and/or**



Bless - ed are they who dwell in your house, for e - ver sing - ing your praise.

Psalm 83(84)

— or (Simple Gradual)



The Lord is my light and my_ sal-va-tion.

Psalm 26(27)

4th Sunday of Lent



You must re-joice, my son, for your brother was dead and has come to life; he was lost and is found.

Psalm 121(122)

5th Sunday of Lent



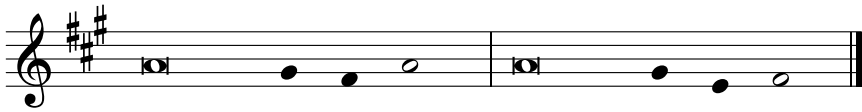
Has no one condemned you, woman? No one, Lord.



Neither shall I condemn you. From now on, sin no more.

Psalm 31(32), verses 1-3, 5, 8, 10-11

Psalm-tone for all Communion antiphons



Simple Gradual texts © 1968, International Committee on English in the Liturgy, Inc.

Roman Missal texts © 2010, International Committee on English in the Liturgy, Inc.

All rights reserved.

Music © 2013 John Ainslie